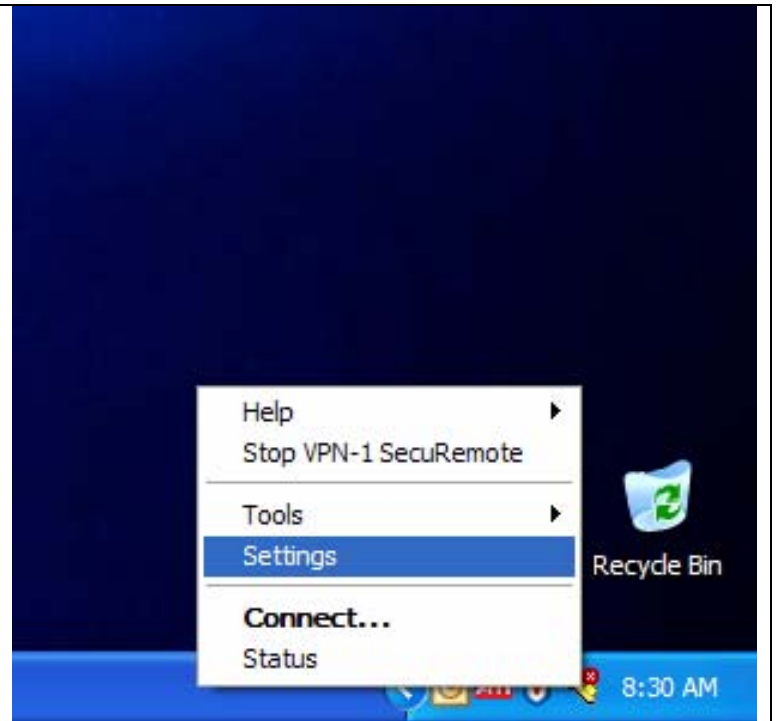


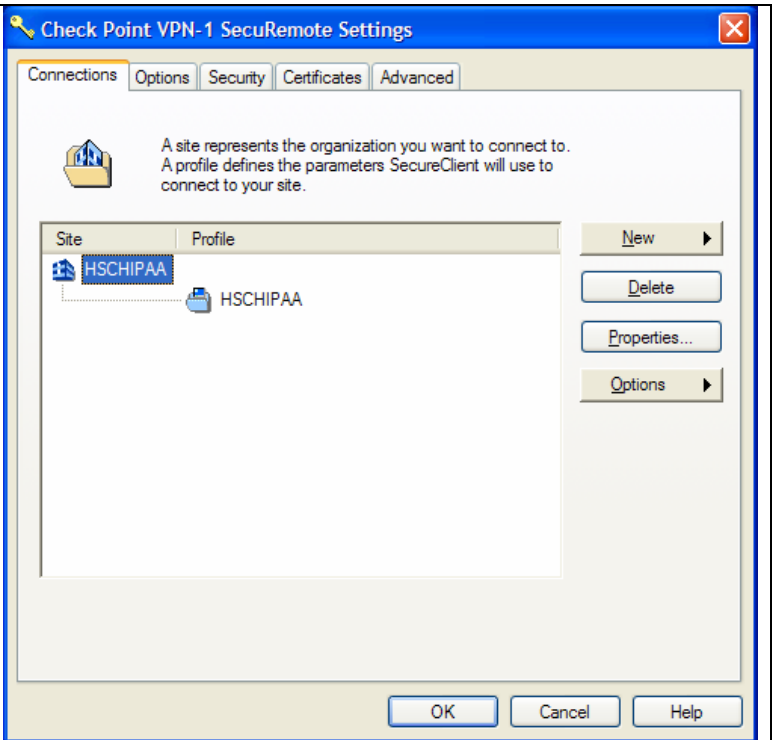
Why read this document?

This document will walk you through the steps of setting up Secure Remote.

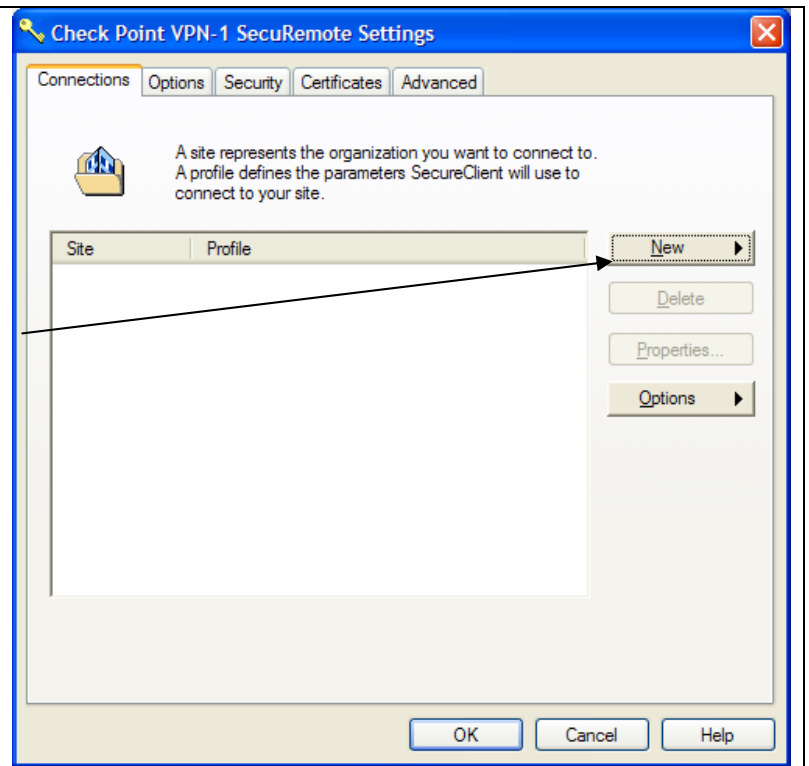
Step One: Right click on the key at the lower right hand of the screen and select settings.



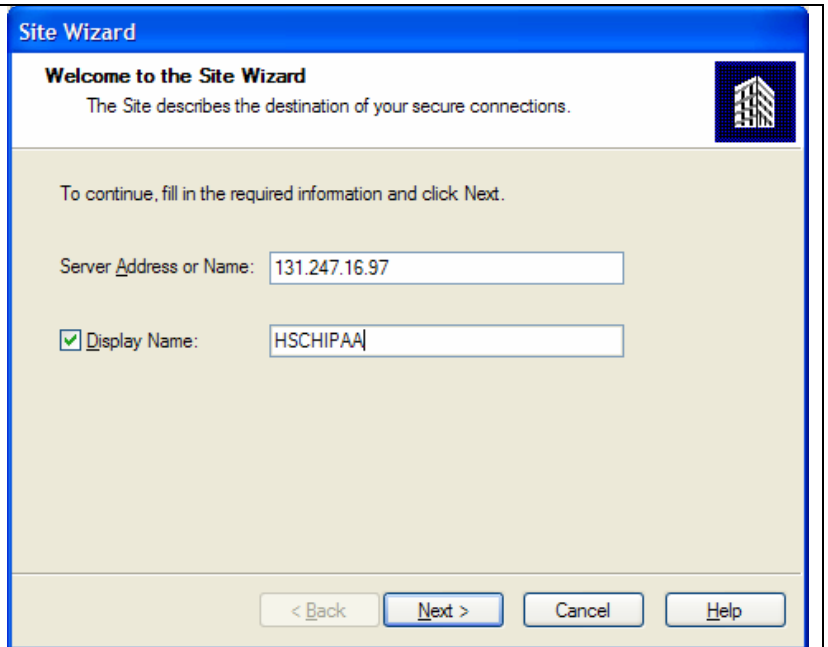
Step Two: This is what you will see next. You will need to click on the Delete key to delete the Site. Just click ok when it asks you if you are sure.



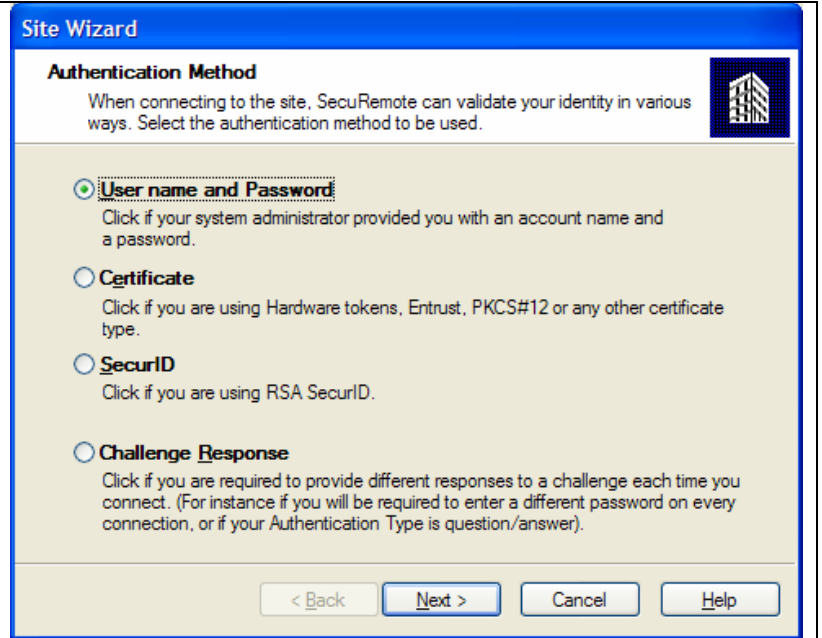
Step Three: Click on new and select site.



Step Four: This is the next screen you will see, just fill in the blanks as shown below. Check the box "Display Name" in order to change the bottom field.

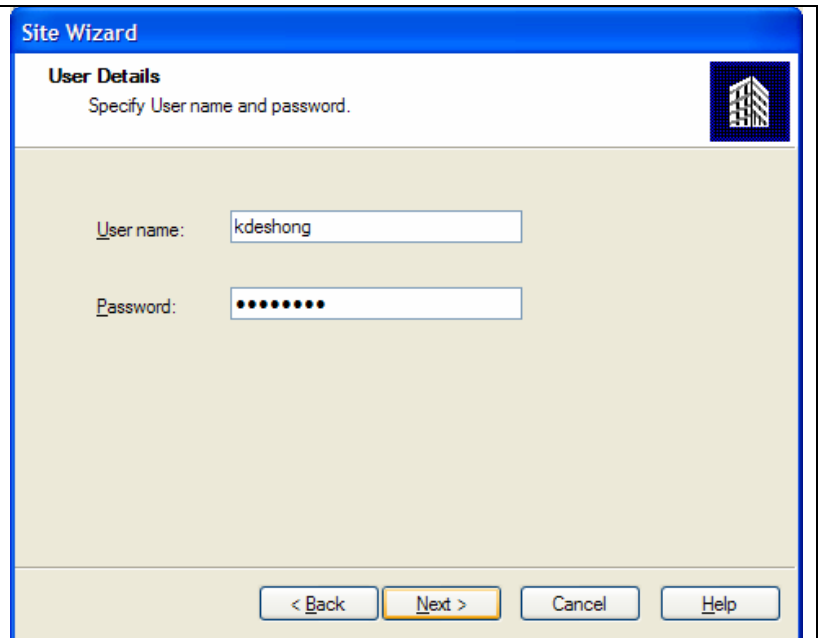


Step Five: Just click next on this screen.



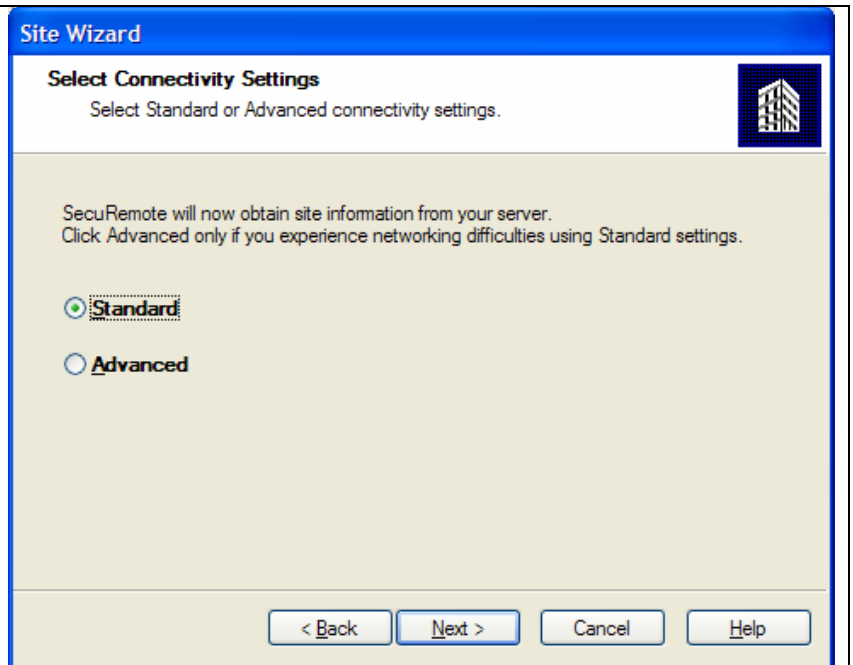
The screenshot shows the 'Site Wizard' window with the 'Authentication Method' section. The title bar reads 'Site Wizard'. Below the title bar, the section is titled 'Authentication Method' with a sub-instruction: 'When connecting to the site, SecuRemote can validate your identity in various ways. Select the authentication method to be used.' There is a small icon of a building in the top right corner. Four radio button options are listed: 'User name and Password' (selected), 'Certificate', 'SecurID', and 'Challenge Response'. Each option has a brief description. At the bottom, there are four buttons: '< Back', 'Next >', 'Cancel', and 'Help'.

Step Six: Type in your username and password on the next screen.

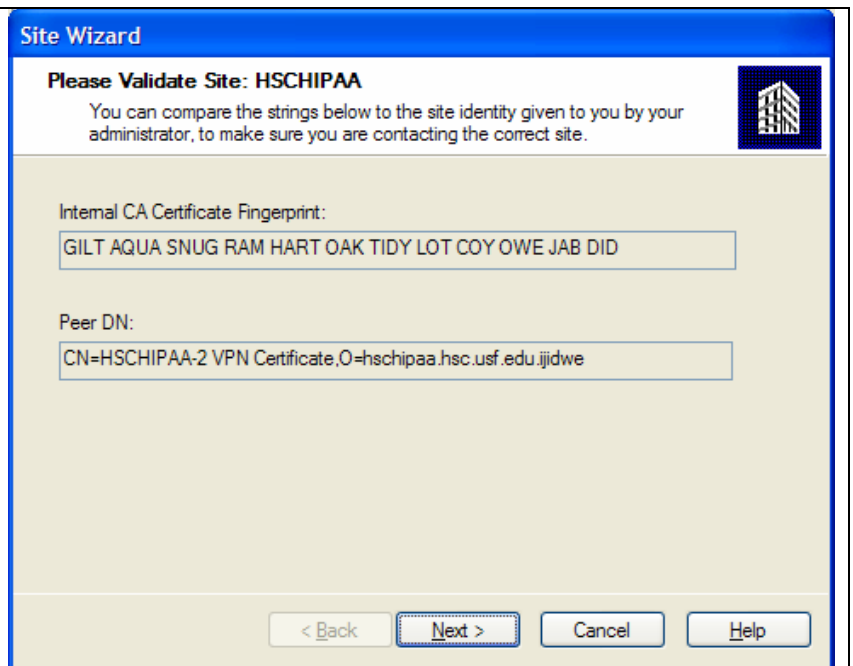


The screenshot shows the 'Site Wizard' window with the 'User Details' section. The title bar reads 'Site Wizard'. Below the title bar, the section is titled 'User Details' with a sub-instruction: 'Specify User name and password.' There is a small icon of a building in the top right corner. There are two input fields: 'User name:' with the text 'kdeshong' and 'Password:' with a masked password of seven dots. At the bottom, there are four buttons: '< Back', 'Next >', 'Cancel', and 'Help'.

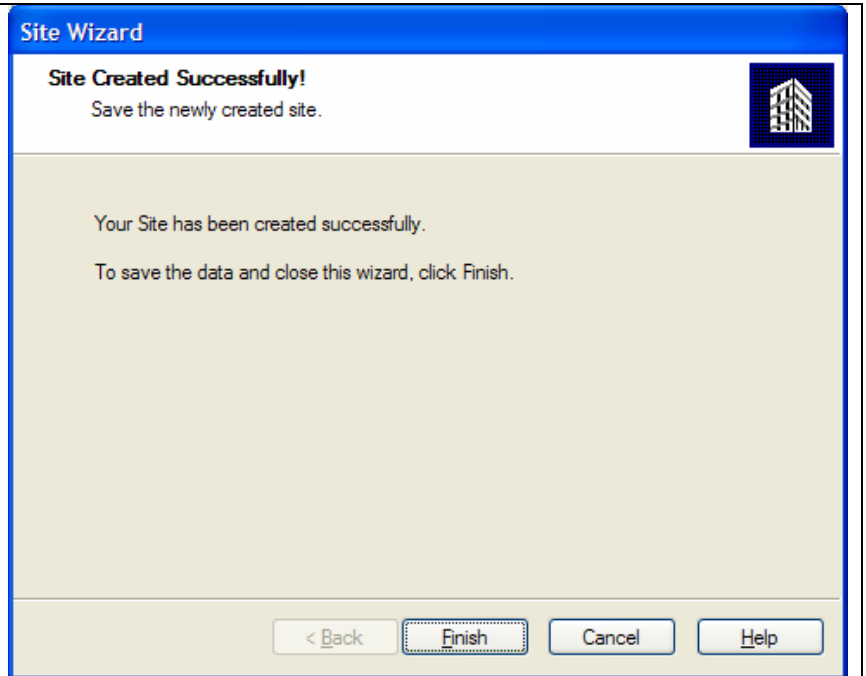
Step Seven: Click next on this screen.



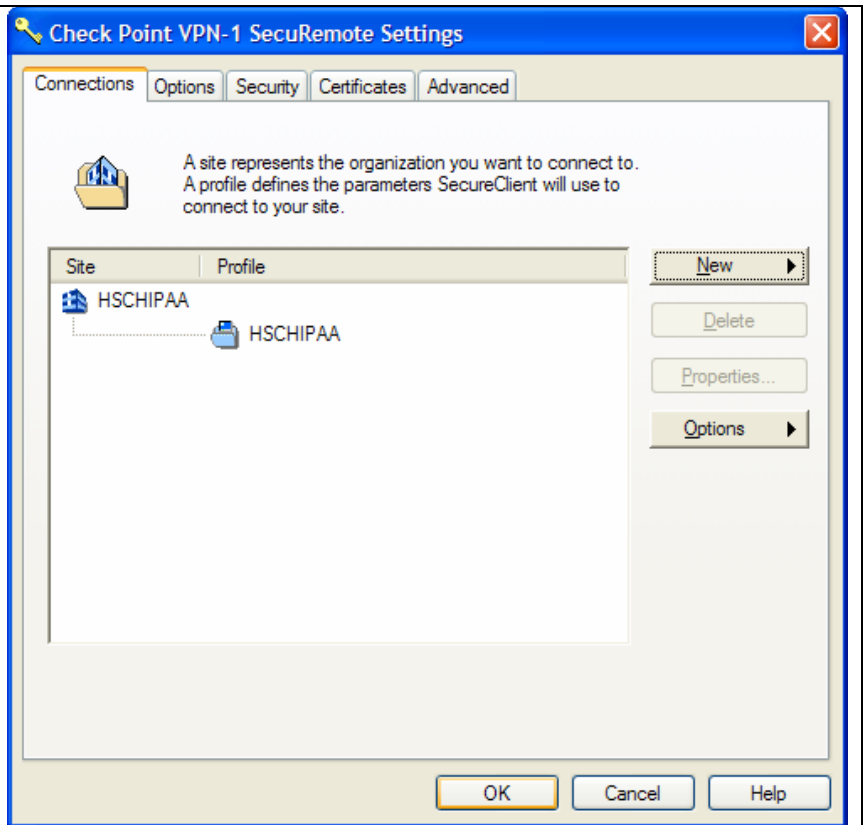
Step Eight: Click next on this screen.



Step Nine: Click finish and you're done.



Step Ten: Click OK to close the window.



You should now be able to connect with SecuRemote.